

DISCLAIMER

Electronic versions of the exhibits in these minutes may not be complete.

This information is supplied as an informational service only and should not be relied upon as an official record.

Original exhibits are on file at the Legislative Counsel Bureau Research Library in Carson City.

Contact the Library at (775) 684-6827 or library@lcb.state.nv.us.

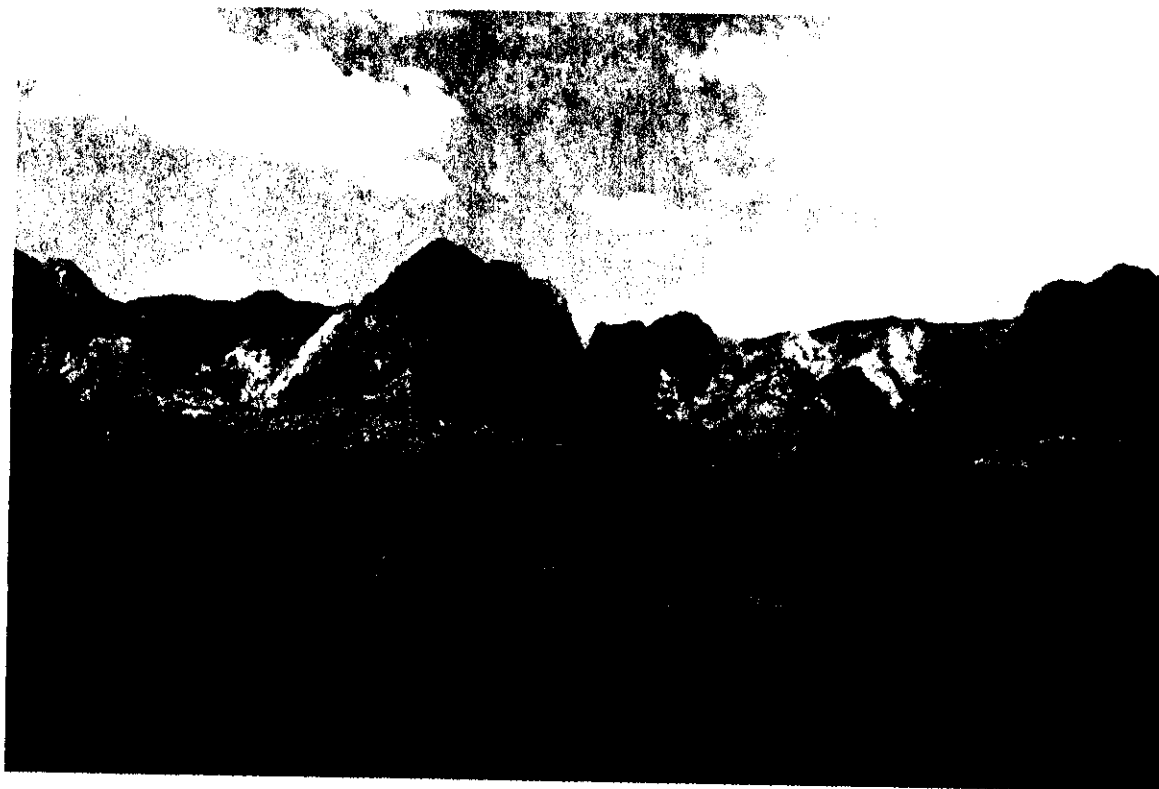


FRIENDS OF RED ROCK CANYON

P.O. BOX 97, BLUE DIAMOND, NEVADA 89004 (702) 255-8743 FAX (702) 363-6779

Red Rock Photos

These photos demonstrate the impact a permanent development will have on the view shed in Red Rock Canyon National Conservation Area



**ORIGINALS ON FILE IN THE
RESEARCH LIBRARY**

ASSEMBLY GOVERNMENT AFFAIRS

DATE: 5/19/03 ROOM: 4401 EXHIBIT H

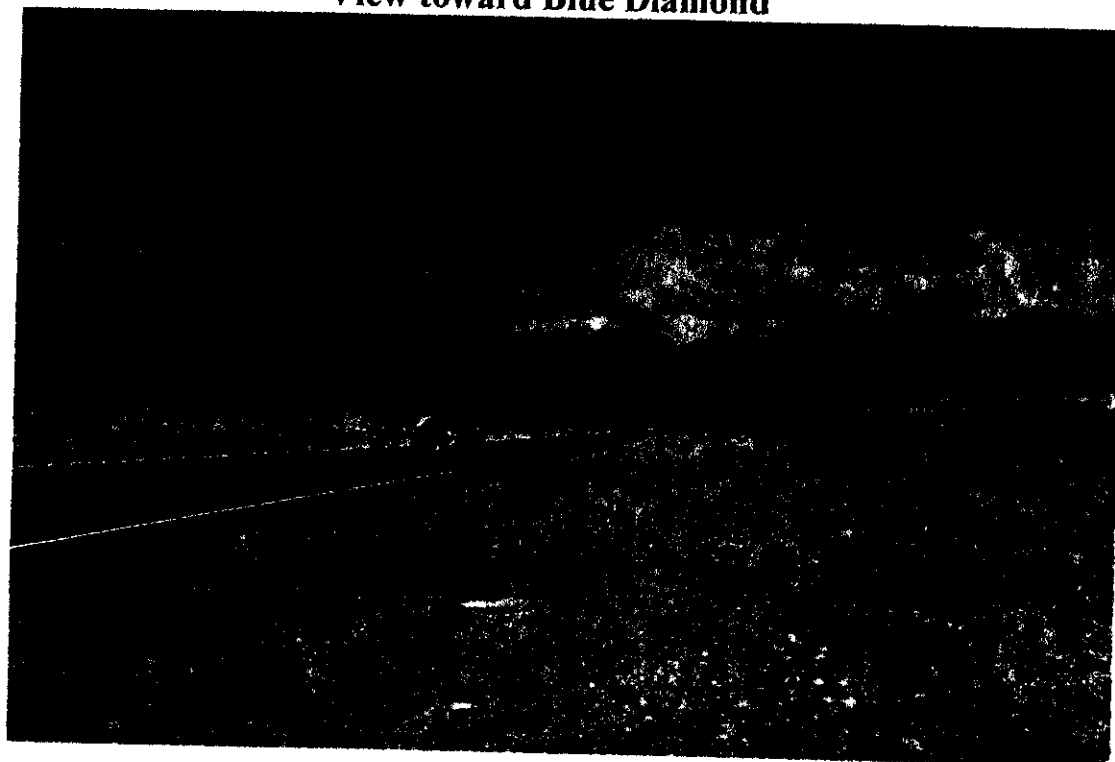
SUBMITTED BY: Mark Beecham

H1 of 6

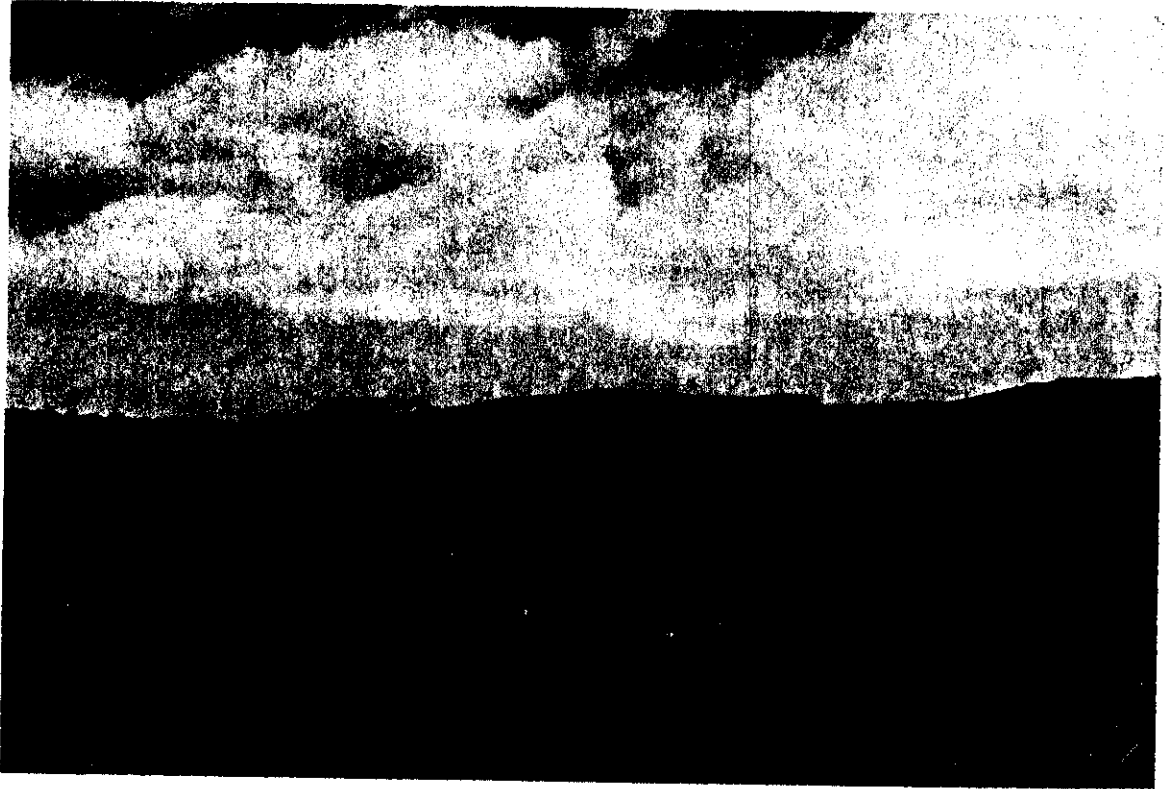
View toward mine site from junction of Highway 160 and Highway 159



View toward Blue Diamond



View of mine site from Highway 159 near Oliver Ranch



View from Highway 159 near the Scenic Overlook



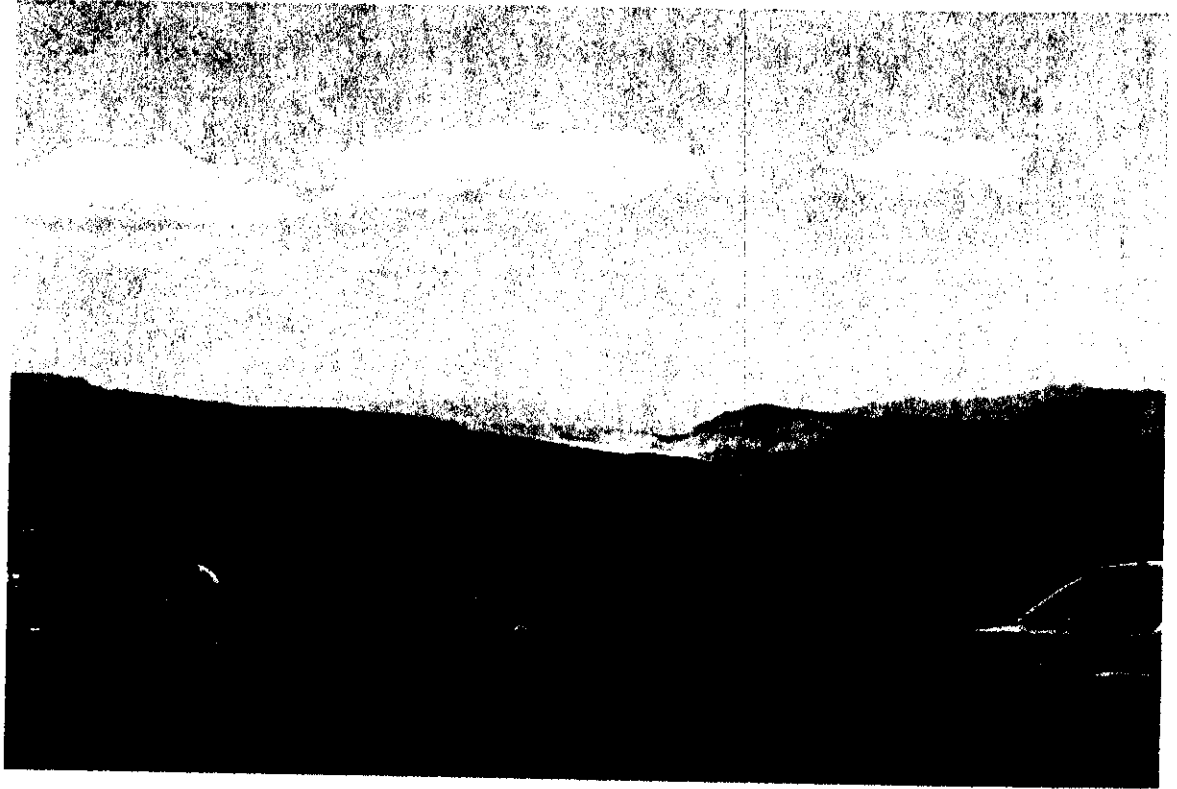
View from Chinle Trail



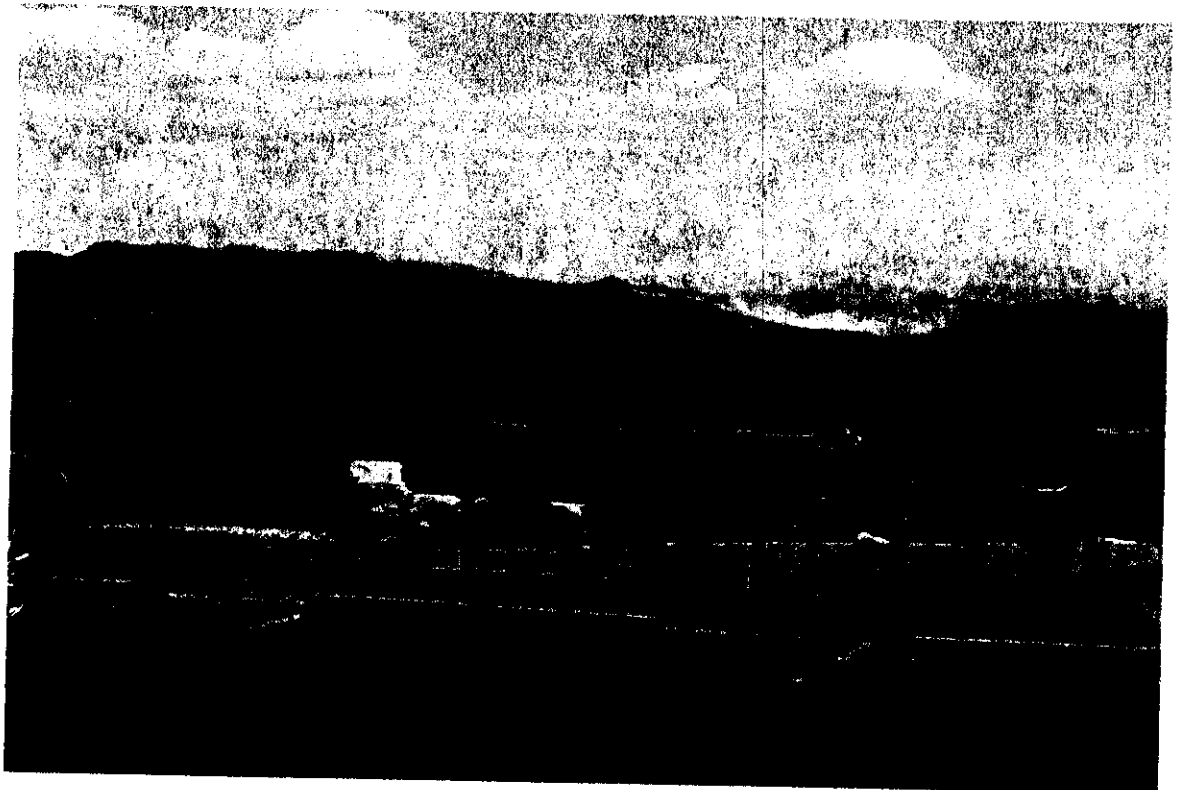
View from Calico



View from Sandstone Quarry



From Scenic overlook



View from Willow Springs Picnic Area



View from Pine Creek Parking lot

