

## DISCLAIMER

Electronic versions of the exhibits in these minutes may not be complete.

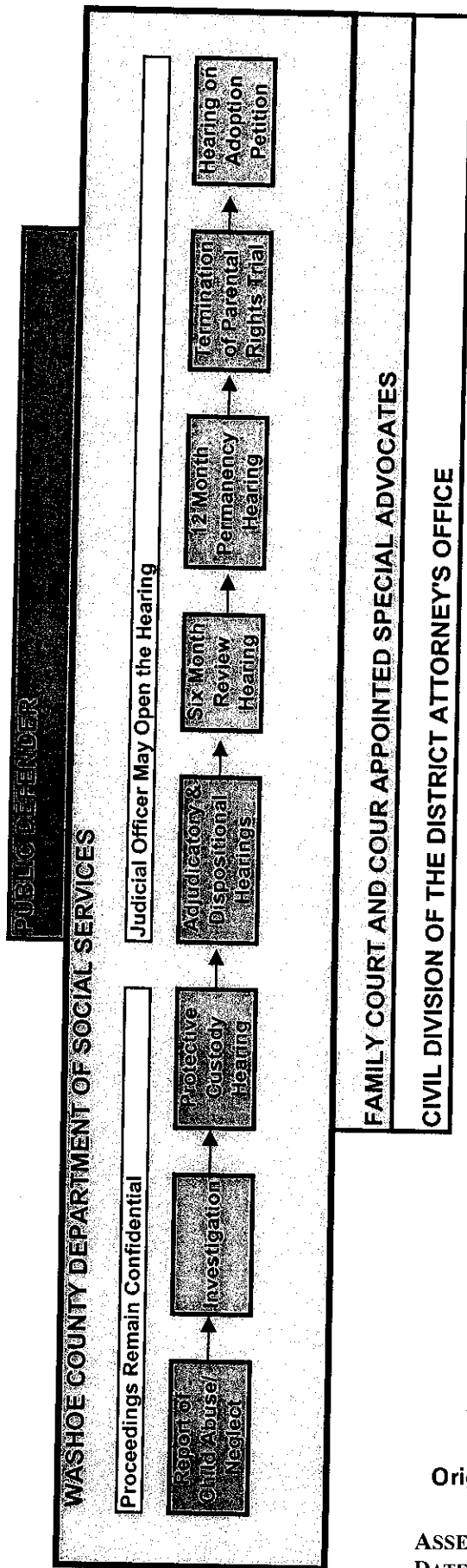
This information is supplied as an informational service only and should not be relied upon as an official record.

Original exhibits are on file at the Legislative Counsel Bureau Research Library in Carson City.

Contact the Library at (775) 684-6827 or [library@lcb.state.nv.us](mailto:library@lcb.state.nv.us).

# WASHOE COUNTY DEPARTMENT OF SOCIAL SERVICES

## Child Welfare Hearing Process Overview



E-1081

Original on file in the Research Library

ASSEMBLY JUDICIARY  
DATE: 3-3-03 ROOM 3138 EXHIBIT E  
SUBMITTED BY: Mike Capello

apello

3/2/2003