

## DISCLAIMER

Electronic versions of the exhibits in these minutes may not be complete.

This information is supplied as an informational service only and should not be relied upon as an official record.

Original exhibits are on file at the Legislative Counsel Bureau Research Library in Carson City.

Contact the Library at (775) 684-6827 or [library@lcb.state.nv.us](mailto:library@lcb.state.nv.us).

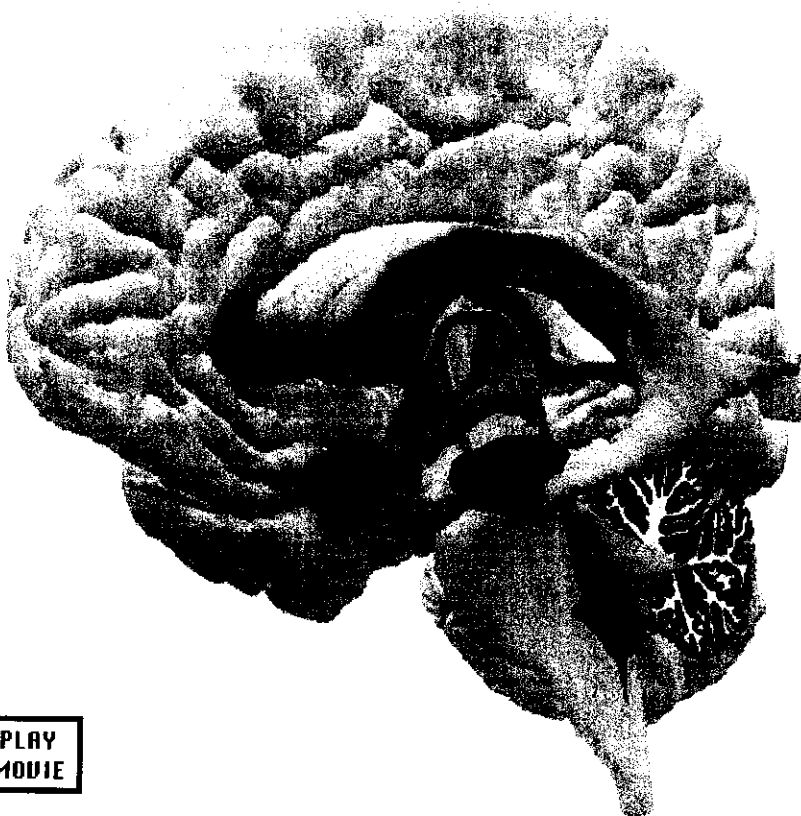
# Amygdala

## Function:

- Arousal
- Controls Autonomic Responses Associated with Fear
- Emotional Responses
- Hormonal Secretions

## Location:

- The amygdala is an almond shaped mass of nuclei located deep within the temporal lobes, medial to the hypothalamus and adjacent to the hippocampus.



PLAY  
MOVIE

COPY OF ORIGINALS ARE ON  
FILE IN THE RESEARCH LIBRARY

ASSEMBLY JUDICIARY  
DATE: 3/27/03 ROOM: 3138 EXHIBIT E  
SUBMITTED BY: LA FASLER