

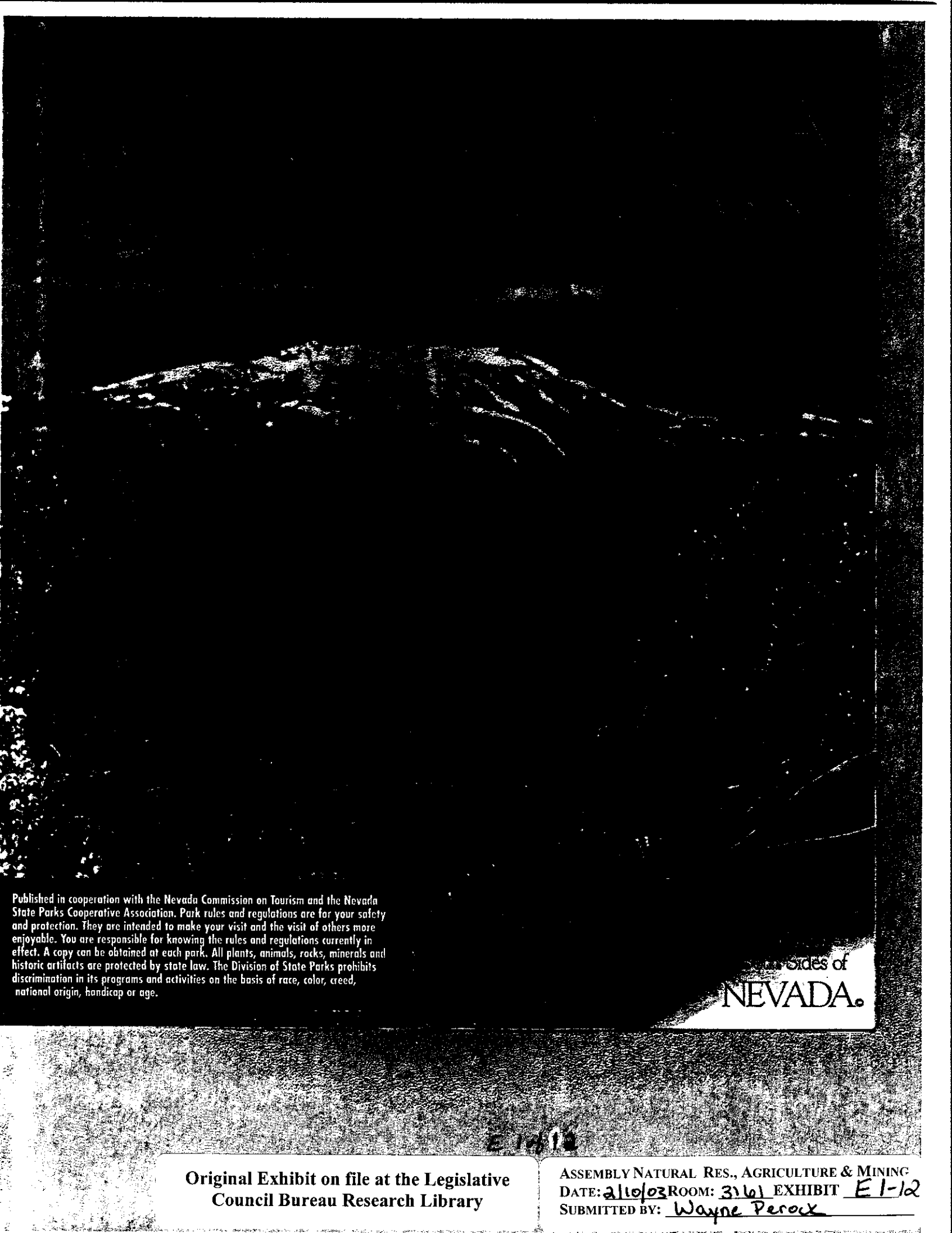
## DISCLAIMER

Electronic versions of the exhibits in these minutes may not be complete.

This information is supplied as an informational service only and should not be relied upon as an official record.

Original exhibits are on file at the Legislative Counsel Bureau Research Library in Carson City.

Contact the Library at (775) 684-6827 or [library@lcb.state.nv.us](mailto:library@lcb.state.nv.us).



Published in cooperation with the Nevada Commission on Tourism and the Nevada State Parks Cooperative Association. Park rules and regulations are for your safety and protection. They are intended to make your visit and the visit of others more enjoyable. You are responsible for knowing the rules and regulations currently in effect. A copy can be obtained at each park. All plants, animals, rocks, minerals and historic artifacts are protected by state law. The Division of State Parks prohibits discrimination in its programs and activities on the basis of race, color, creed, national origin, handicap or age.

Sierra Sides of  
NEVADA.

E 1-12

Original Exhibit on file at the Legislative  
Council Bureau Research Library

ASSEMBLY NATURAL RES., AGRICULTURE & MINING  
DATE: 2/10/03 ROOM: 3161 EXHIBIT E 1-12  
SUBMITTED BY: Wayne Perox

## FACILITIES & AMENITIES

	Camping	Group Camping	Dump Station	Shower	Picnicking	Group Picnicking	Visitor Center	Boat Launch	Trails	Historic Sites	Nature Study	Swimming	Fishing	Winter Sports
<b>Western Nevada (Carson/Lake Region)</b>														
Dayton State Park	•		•		•	•				•	•		•	
Lake Tahoe Nevada State Park					•	•		•			•	•	•	•
Mormon Station State Historic Park					•	•				•				
Washoe Lake State Park	•	•	•	•	•	•		•	•		•	•	•	
<b>Central Nevada (Fallon Region)</b>														
Berlin-Ichthyosaur State Park	•	•	•		•		•		•	•	•			
Belmont Courthouse State Historic Site										•				
Fort Churchill State Historic Park	•	•	•		•	•	•		•	•	•			
Lahontan State Recreation Area	•		•		•	•		•					•	
Walker Lake State Recreation Area					•			•				•	•	
Rye Patch State Recreation Area	•	•	•	•	•	•		•				•	•	
<b>Northern Nevada (Elko Region)</b>														
South Fork State Recreation Area	•		•	•	•			•					•	•
Wildhorse State Recreation Area	•		•	•	•								•	•
<b>Eastern Nevada (Panaca Region)</b>														
Beaver Dam State Park	•	•	•		•	•					•	•	•	•
Cathedral Gorge State Park	•	•	•	•	•	•				•				
Cave Lake State Park	•	•	•		•	•			•				•	
Echo Canyon State Park	•	•	•		•	•		•			•		•	
Kershaw-Ryan State Park	•				•	•								
Spring Valley State Park	•		•	•	•			•					•	•
Ward Charcoal Ovens State Historic Park	•				•					•			•	
<b>Southern Nevada (Las Vegas Region)</b>														
Big Bend of the Colorado State Recreation Area					•			•			•	•	•	
Floyd Lamb State Park					•	•		•		•	•		•	
Old Las Vegas Mormon Fort State Historic Park														
Spring Mountain Ranch State Park					•	•			•		•			
Valley of Fire State Park	•	•	•	•	•	•		•		•	•			

Reno  
Lake  
Territory

95 140 225 93

447 769 80 80 93

P 0 93

80 305 93

Pony Lake  
Territory

50 361 93

395 378 93

95 6 318 93

95 375 93

374 378 93

378 300 15

Las Vegas  
Territory

95 140

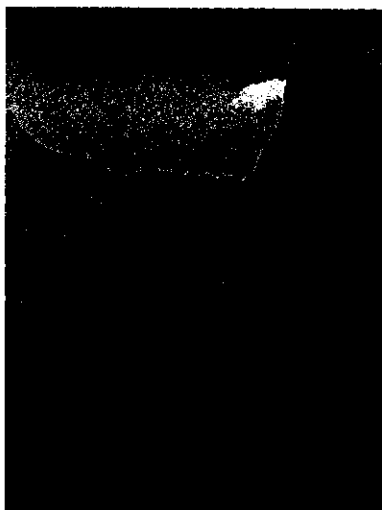
95

- Baker Lake State Park
- Baldy Mountain State Historic Site
- Bear Lake State Park
- Big Bend State Historic Site
- Cathedral Caves State Park
- Clear Lake State Park
- Dayton State Park
- Echo Canyon State Park
- Ford Lake State Park
- Fort Churchill State Historic Site
- Harlowe State Historic Site
- Lake Tahoe State Historic Site
- Lake Tahoe Nevada State Park
- Mormon Station State Historic Site
- Old Las Vegas Mormon Fort State Historic Site
- Pine Point State Historic Site
- South Fork State Historic Site
- Spring Mountain Ranch State Park
- Stead State Park
- Valley of Fire State Park
- Walker Lake State Recreation Area
- Ward Churchill Owens State Historic Park
- Washoe Lake State Park
- Wild Horse State Recreation Area

To assist you in your travels  
reflect the diverse regional  
call the Nevada Commission

## BEAVER DAM STATE PARK

c/o Panaca Region Headquarters  
P.O. Box 176, Panaca, NV 89042  
(775) 728-4467



**B**eaver Dam is Nevada's most primitive and rustic park. Deep canyons, pinion and juniper forests, a flowing stream and a small reservoir are the primary features, offering fishing, camping, picnicking, hiking, photography and nature study. Facilities include

campgrounds, a group use area, a day-use picnic area, hiking and interpretive trails, and hiking access to the reservoir (boats are not recommended). Beaver Dam is open year-round, weather permitting, but travel is not advised during winter months.

The park's elevation is 5,000' and it is located 34 miles east of Caliente, six miles north on U.S. 93, then 28 miles east on a graded gravel road.

## BELMONT COURTHOUSE STATE HISTORIC SITE

c/o Fallon Region Headquarters  
16799 Lahontan Dam, Fallon, NV 89406  
(775) 867-3001

**B**uilt in 1876, the Belmont Courthouse was the seat of Nye County government until 1905. The building is partially restored and offers a glimpse into Nevada's colorful past. Although no developed facilities are available, camping and picnic facilities are available on nearby



public lands or at the Pine Creek Campground in the Monitor Valley, 20 miles to the north. Tours of the courthouse are given during summer months. Call the Fallon Region office for dates and times.

The ghost town of Belmont is located 45 miles northeast of Tonopah via U.S. Highway 6, State Route 376 and Monitor Valley Road.

## BERLIN-ICHTHYOSAUR STATE PARK

HC 61 Box 61200, Austin, NV 89310  
(775) 964-2440

**B**erlin, a turn-of-the-century mining town, is preserved in a state of "arrested decay." Ichthyosaurs



(pronounced ick-thee-o-sores) were ancient marine reptiles that swam in a warm ocean which covered central Nevada 225 million years ago. Fossils of these giant animals are on display at the park's Fossil House, and are a primary attraction for visitors from throughout the world. Other activities include hiking, camping and picnicking. An interpretive

trail and seasonal tours tell of the history and features of Berlin and its mines; a nature trail connects the campground to the Fossil House.

Berlin-Ichthyosaur State Park's elevation is 7,000' and is located 23 miles east of Gabbs, via State Route 844. The park is open all year but extreme winter weather may prohibit travel.



## BIG BEND OF THE COLORADO STATE RECREATION AREA

P.O. Box 32850

Laughlin, NV 89028-2850

(702) 298-1859

**B**ig Bend is Nevada's newest state park, situated on the shores of the Colorado River below Laughlin in Nevada's southern tip. The park offers dramatic views of the river and surrounding mountains. Popular activities are picnicking, fishing, boating, and swimming. When completed, the park will also offer camping and hiking. The park is located five miles south of Laughlin on the Needles Highway. Here, summertime temperatures can soar up to 120°F.

## CATHEDRAL GORGE STATE PARK & THE REGIONAL VISITOR CENTER

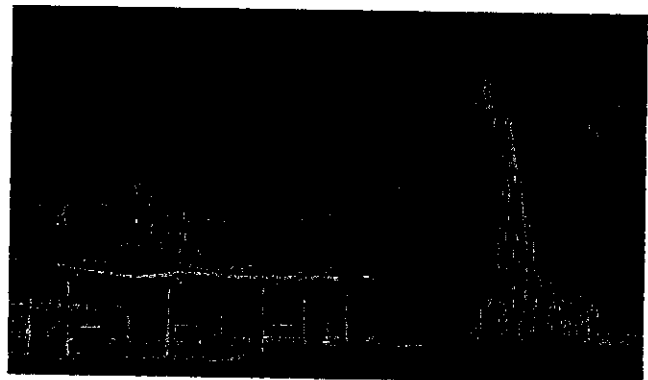
P.O. Box 176, Panaca, NV 89042

(775) 728-4460



**C**athedral Gorge is located in a long, narrow valley where erosion has carved dramatic and unique patterns in the soft bentonite clay. Trails abound for exploring the cave-like formations and cathedral-like spires. Miller Point, a scenic overlook just north of the park entrance on U.S. 93, offers excellent views of the scenic canyon. Shaded picnic areas and a tree-shaded campground area

are open all year. Hiking, picnicking, camping, nature study, photography and ranger programs are the most common activities at the park.

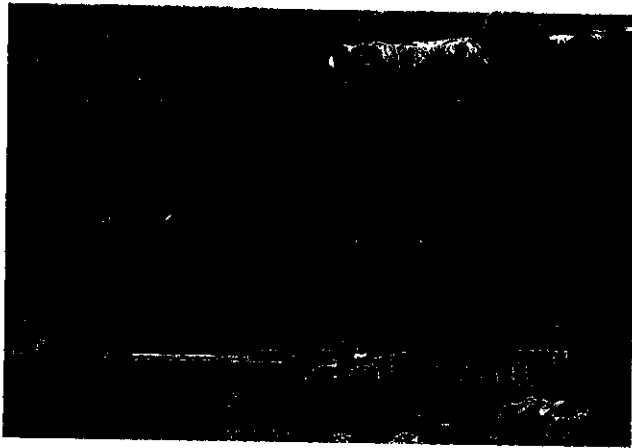


A Regional Visitor Center are located at the entrance to Cathedral Gorge, offering interpretive displays and information about all of eastern Nevada and seven state parks. The park and visitor center are located just west of U.S. 93, two miles north of Panaca.

## CAVE LAKE STATE PARK

P.O. Box 761, Ely, NV 89301

(775) 728-4467



The 32-acre reservoir at Cave Lake State Park is popular for trout fishing, boating, picnicking and camping. Perched in the middle of the Schell Creek Range at an elevation of 7,300', the park offers outstanding scenic views and opportunities for nature study and photography. Facilities include campgrounds, picnic areas, hiking trails and a boat launch. Winter sports such as ice fishing, cross-country skiing and ice skating are also available. Weather permitting, Cave Lake is open all year.

The park is 15 miles southeast of Ely via U.S. 50/6/93 and Success Summit Road.

## DAYTON STATE PARK

P.O. Box 412, Dayton, NV 89403

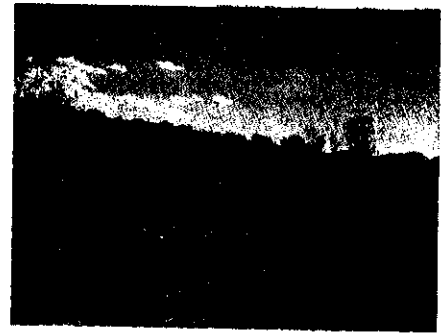
(775) 687-5678



Dayton State Park is located in the town of Dayton, one of Nevada's first permanent settlements. The Carson River flows through the park and

offers fishing and bird watching.

The Rock Point Mill, built in 1861, was once used to process rich silver ore from nearby

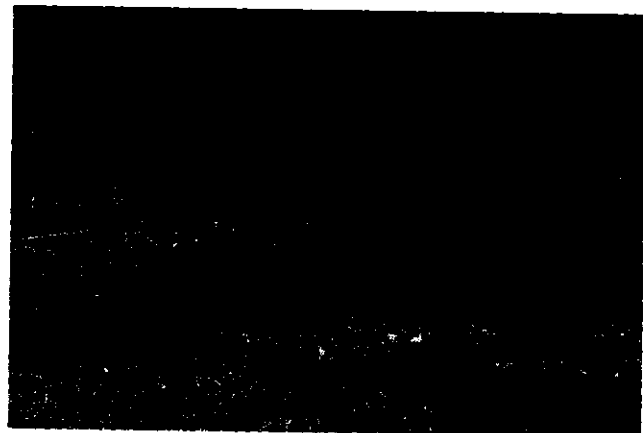


Virginia City. Remnants of the mill are still visible within the park, just west of U.S. 50. Picnicking, camping and group use facilities are available. Dayton State Park is located on U.S. 50, 12 miles east of Carson City.

## ECHO CANYON STATE PARK

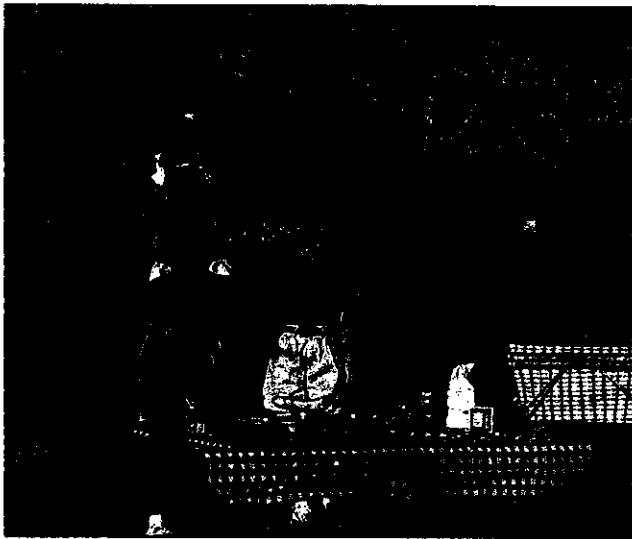
Star Route, Box 295, Pioche, NV 89043

(775) 962-5103



Echo Canyon offers a 65-acre reservoir with a campground, picnic area, group use facilities and boat launch. The park is popular for camping, fishing, hiking and enjoying the beautiful scenery of eastern Nevada. Abundant wildlife, a wide variety of native plants and unique rock formations make exploration a favorite activity. Echo Canyon is located 12 miles east of Pioche via State Routes 322 and 323. The park's elevation is 5,200' and although it is open year-round, visitors should be aware of occasional snow during winter months.





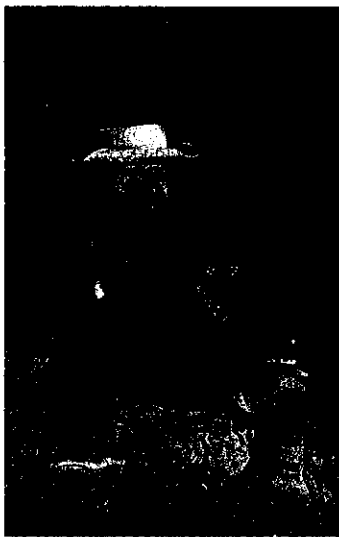
## FORT CHURCHILL STATE HISTORIC PARK

Silver Springs, NV 89429  
(775) 577-2345

Fort Churchill was once a U.S. Army fort built in 1861 to provide protection for early settlers. It was abandoned ten years later, and today the ruins are preserved in a state of arrested decay. A visitor center displays information and artifacts of the fort's history. The Pony Express and the Overland Telegraph once passed through this area. Nearby is Buckland Station, a Pony Express stop, supply center, and former hotel built in 1870. Facilities at Fort Churchill State Historic Park include trails, a campground, picnic area, group-use area and access to the Carson River. Visitors can enjoy hiking, historic and environmental education, camping, picnicking, photography and canoeing. The park is located eight miles south of Silver Springs on Alternate U.S. 95.

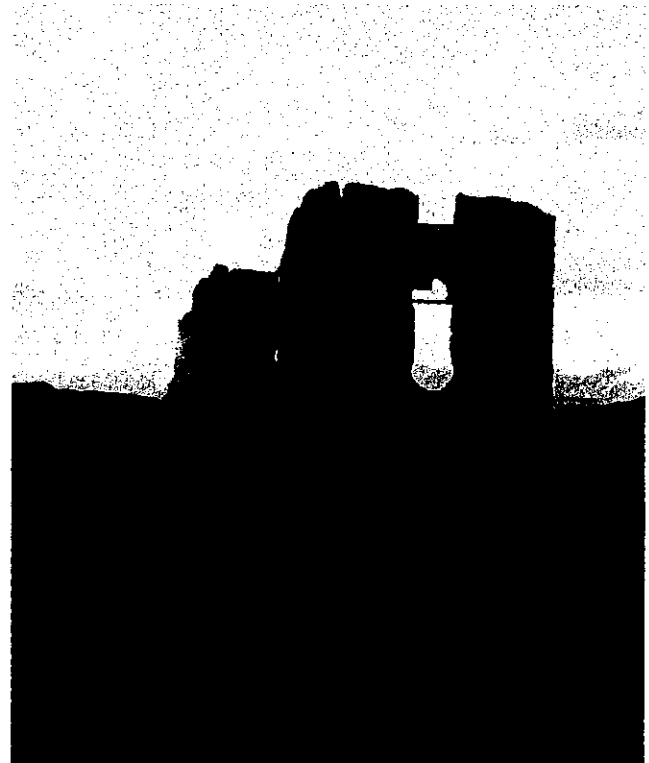
## FLOYD LAMB STATE PARK

9200 Tule Springs Road, Las Vegas, NV 89131  
(702) 486-5413

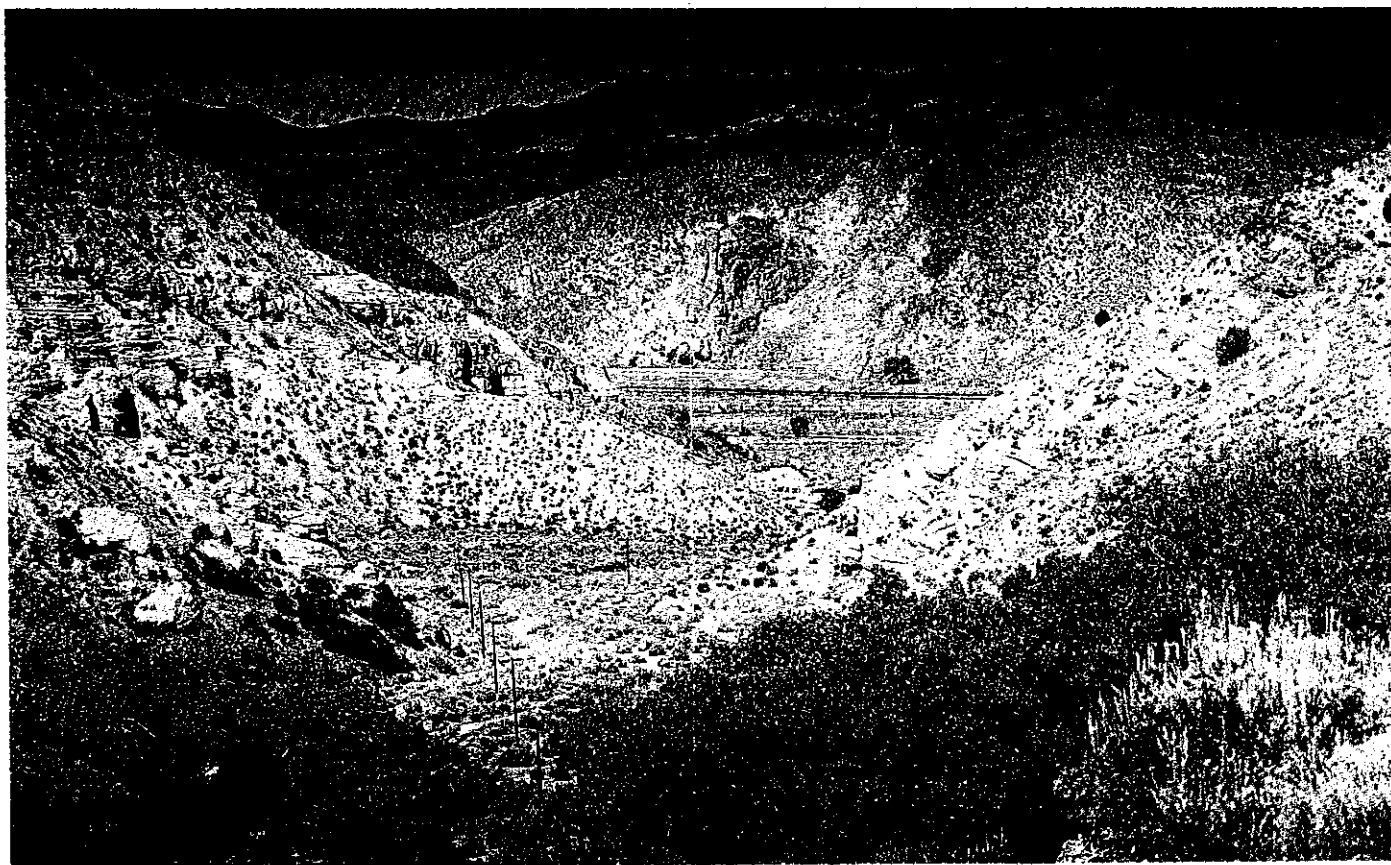


Originally known as Tule Springs, this park was an early water stop for Native Americans. It later became a privately-owned working ranch, as well as a guest/dude ranch in the 1950s, where one could wait out the six-week Nevada residency requirement to obtain a quick divorce. In addition to the Tule Springs Ranch Historic

Area, the park offers tree-shaded groves alongside four small fishing lakes. The park is available for day use only. Facilities include picnic areas with tables and grills, restrooms, group areas and a walking/bicycle path that winds through the park. Floyd Lamb State Park is located ten miles north of Las Vegas, via U.S. 95 to Durango and then Tule Springs Road.







## KERSHAW-RYAN STATE PARK

HCR 64 Box 3  
Caliente, NV 89008  
(775) 726-3564

**K**ershaw-Ryan State Park is situated in a colorful, scenic canyon at the northern limit of Rainbow Canyon. Steep canyon walls tower over a long, narrow valley. Early settlers here cultivated a garden of grape vines, trees, and grassy lawn surrounding a spring-fed pond, providing a sharp contrast to the rugged landscape. A picnic area, small campground, restrooms and trails offer visitors nature study, photography, picnicking, camping and hiking.

Kershaw-Ryan State Park is located three miles south of Caliente via U.S. 93 and State Route 317.

## LAHONTAN STATE RECREATION AREA

16799 Lahontan Dam, Fallon, NV 89406  
(775) 867-3500 Park Headquarters  
(775) 577-2226 Silver Springs Ranger Station

**L**ahontan Reservoir, with 69 miles of shoreline, covers 12,000 surface acres when full and features fishing, boating and water skiing, as well as camping, picnicking, a boat launch and RV sewage dump facilities. Lahontan is located on the Carson River, 18 miles west of Fallon and 45 miles east of Carson City via U.S. 50. The park is open year-round and can be accessed from several entrances on U.S. 50 east of Silver Springs and U.S. 95 south of Silver Springs.

## LAKE TAHOE NEVADA STATE PARK

P.O. Box 8867, Incline Village, NV 89452  
(775) 831-0494

**L**ake Tahoe Nevada State Park offers a number of different areas for visitors to enjoy. Sand Harbor is the most popular, with sandy beaches, a boat launch, picnicking and group use facilities. Sand Harbor is located three miles south of Incline Village on State Route 28. Memorial Point and Hidden Beach, situated



between Incline Village and Sand Harbor, are areas which offer outstanding views of the lake and more secluded access to its shores. Spooner Lake, at the intersection of State Route 28 and U.S. 50, is popular for picnicking, hiking, mountain biking, catch-and-release fishing and cross-country skiing. A group use area is available. Spooner Lake is also a trailhead with access to the backcountry. The backcountry between Lake Tahoe and Carson City provides miles of hiking, equestrian and mountain biking trails plus two primitive campsites. No vehicles are permitted in the backcountry, which has been designated as a State Primitive Area. Two of the more popular trails in this area are the Flume Trail above Sand Harbor and the Tahoe Rim Trail along the crest of the Carson Range. Cave Rock, located along U.S. 50 near Zephyr Cove, is a popular spot for boat launching and fishing.

## MORMON STATION STATE HISTORIC PARK

Genoa, NV 89411, (775) 782-2590



**M**ormon Station is the site of Nevada's first permanent non-native settle-

ment. A replica of the original trading post built in 1851 houses a small museum with relics of pioneer days. Picnic and group facilities are available. Mormon Station is located in the small town of Genoa, 12 miles south of Carson City via U.S. 395 and State Route 206. The park is open May through October.

## OLD LAS VEGAS MORMON FORT STATE HISTORIC PARK

500 E. Washington Ave., Las Vegas, NV 89101  
(702) 486-3511

**T**he first permanent non-native settlers in the Las Vegas Valley were a group of Mormon missionaries who built an adobe fort along Las Vegas Creek in 1855. They successfully farmed the area by diverting water from the creek. Today, the park includes a remnant of the original adobe fort, which serves as a visitor center with interpretive displays. Future development will include the re-creation of many historic features and a full-scale visitor center. Historic interpretation is and will remain the focus of the park. The Old Las Vegas Mormon Fort is located in downtown Las Vegas, at the intersection of Las Vegas Boulevard and Washington Avenue. The park is open all year.



## RYE PATCH STATE RECREATION AREA

2505 Rye Patch Reservoir Road, Lovelock, NV 89419  
(775) 538-7321



**R**ye Patch Reservoir, along the Humboldt River, covers 11,000 acres when full. Here, visitors enjoy fishing, boating, water skiing, camping, and picnicking. A campground, boat

launch and picnic sites are provided. Rye Patch is located 22 miles north of Lovelock on Interstate 80.

## SOUTH FORK STATE RECREATION AREA

HC 30 353-8, Elko, NV 89801  
(775) 744-4346

**S**outh Fork Reservoir covers 1,650 acres and is surrounded by 2,200 acres of wildlife-filled meadowlands and rolling hills. It is



popular for hunting, camping, boating, picnicking, winter sports and wildlife viewing. The park is best known for its trophy-class trout and bass fishery. Facilities include a boat launch, campground, trailer dump station and picnic area. Located 16 miles south of Elko on State Route 228, the park is open year-round, but access may be hampered by extreme cold and snow during the winter months.

## SPRING MOUNTAIN RANCH STATE PARK

P.O. Box 124, Blue Diamond, NV 89004  
(702) 875-4141

**H**istoric Spring Mountain

Ranch is located within the Red Rock Canyon National Conservation Area, beneath the colorful cliffs of the magnifi-



cent Wilson Range. The many springs in these mountains provided water for Paiute Indians and later brought mountain men and early settlers to the area. Past owners of the ranch included Chester Lauck of the comedy team "Lum & Abner," German actress Vera Krupp, and millionaire Howard Hughes. Guided tours through the Ranch House and other historic ranch buildings are available on weekends and holidays. A visitor center is open Friday through Monday and on holidays. Other facilities include a tree-shaded picnic area, scenic hiking trails and a cultural events pavilion. The park is located 15 miles west of Las Vegas on State Route 159 (the Blue Diamond Highway).

## SPRING VALLEY STATE PARK

Star Route, Box 201, Pioche, NV 89043  
(775) 962-5102

**S**pring Valley State Park offers water-oriented recreation at the 65-acre Eagle Valley Reservoir. Boat launching, picnicking and camping facilities are available. Visitors also enjoy hiking, exploring and touring the historic Ranch House museum. The park is located 20 miles east of Pioche via State Route 322. Spring Valley State Park is open all year, although snow may make winter access difficult.



## VALLEY OF FIRE STATE PARK

P.O. Box 515, Overton, NV 89040  
(702) 397-2088

Valley of Fire is Nevada's oldest and largest state park. The valley derives its name from the red sandstone formations and the stark beauty of the Mojave Desert. Ancient trees and early man are represented throughout the park by areas of petrified wood and 3,000-year-old Indian petroglyphs. Popular activities include camping, hiking, picnicking and photography. The park offers a full-scale visitor center with extensive interpretive displays. Several group use areas are also available. Valley of Fire State Park is located only six miles from Lake Mead and 55 miles northeast of Las Vegas via Interstate 15 and State Route 169, or via Lake Mead Northshore Road and State Route 169. The park is open all year.

## WALKER LAKE STATE RECREATION AREA

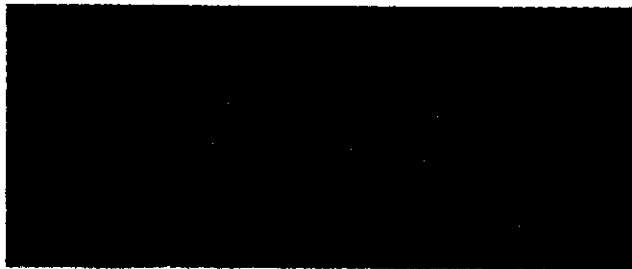
c/o Fallon Region Headquarters  
16799 Lahontan Dam, Fallon, NV 89406, (775) 867-3001

Walker Lake is one of the last remnants of an ancient inland sea which covered much of western Nevada nearly 10,000 years



ago. Visitors enjoy fishing, boating, swimming and picnicking, plus facilities at the park include shade ramadas, tables and grills along a sandy beach. Walker Lake State Recreation Area is located 11 miles north of Hawthorne on U.S. 95. The park is open all year.





## WARD CHARCOAL OVENS STATE HISTORIC PARK

P.O. Box 193  
Ely, NV 89301  
(775) 728-4467

**W**ard Charcoal Ovens is known for its six historic charcoal ovens. These beehive-shaped ovens were used in the late 19th century to generate charcoal for use in the mines of nearby Ward. Today, the park offers limited facilities for picnicking and camping. Other features include forested woodlands, lush riparian areas and outstanding views of the Steptoe Valley and surrounding mountains. The park is located seven miles south of Ely via U.S. 50/6/93, then 11 miles southwest on Cave Valley Road. Cave Valley Road is a graded dirt road, accessible by passenger vehicles from May through October.

## WASHOE LAKE STATE PARK

4855 East Lake Blvd.  
Carson City, NV 89704  
(775) 687-4319

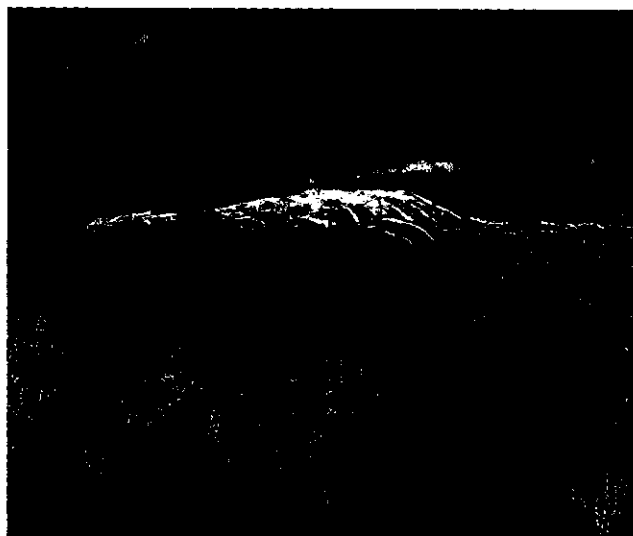
**W**ashoe and Little Washoe Lakes are located in the heart of scenic Washoe Valley, between Carson City and Reno. Here, visitors will find spectacular views of the majestic Sierra



Nevada and the Carson Range. Popular activities in the park include nature study, bird watching, hiking, horse-back riding, picnicking, windsurfing, water skiing, catamaran sailing, jet skiing and fishing. A campground, boat launches, group use area, day-use picnic sites and equestrian trailhead are available. A wetlands area with a viewing tower and interpretive displays is a new addition to the park. The park is located 10 miles north of Carson City and 15 miles south of Reno via U.S. 395, then Eastlake Blvd.

## WILDHORSE STATE RECREATION AREA

HC 31, Box 265, Elko, NV 89801  
(775) 758-6493



**W**ild Horse State Recreation Area occupies 120 acres on the northeast shore of Wild Horse Reservoir. Visitors to the area enjoy camping, picnicking, hunting, fishing and boating. Facilities include campgrounds, a trailer dump station, boat launch and ranger station. The park is open year-round, but access may be hampered by extreme cold and snow in winter months. Wild Horse Reservoir commonly boasts the state's lowest winter temperatures. The park is located 67 miles north of Elko on State Route 225.