

## DISCLAIMER

Electronic versions of the exhibits in these minutes may not be complete.

This information is supplied as an informational service only and should not be relied upon as an official record.

Original exhibits are on file at the Legislative Counsel Bureau Research Library in Carson City.

Contact the Library at (775) 684-6827 or [library@lcb.state.nv.us](mailto:library@lcb.state.nv.us).

## **Nevada Department of Agriculture**

### **Reno**

#### **Main Office**

*Paul Iverson, Director*

350 Capitol Hill Ave., Reno, Nevada 89502

Phone: (775) 688-1180

Fax: (775) 688-1178

### **Carson City**

251 Jeanell Drive, Suite 3, Carson City, Nevada 89703

Phone: (775) 684-5333

Fax: (775) 882-5121

### **Las Vegas**

#### **Plant Industry/Masurement Standards District Office**

2300 McLeod, Las Vegas, Nevada 89104

Phone: (702) 486-4690

Fax: (702) 486-4695

### **Winnemucca**

#### **Plant Industry District Office**

1200 E. Winnemucca Blvd., Winnemucca, Nevada 89445

Phone: (775) 623-6502

Fax: (775) 625-1200

### **Elko**

#### **Animal/Plant Industry/Masurement Standards District Office**

1351 Elm St., Elko, Nevada

Phone: (775) 739-8076

Fax: (775) 738-2639

### **Sparks**

#### **Division of Measurement Standards**

2150 Frazer Street, Sparks, Nevada 89431

Phone: (775) 688-1166

Fax: (775) 688-2533

#### **Livestock Identification Offices**

Elko, NV (775) 738-8076

Ely, NV (775) 289-2175

Las Vegas, NV (702) 294-1138

Winnemucca, NV (775) 623-5355

# **Nevada Department of Agriculture**



**To encourage,  
advance, and protect  
Nevada agriculture**

[agri.state.nv.us](http://agri.state.nv.us)

H-144

## Agriculture in Nevada

Agriculture is one of Nevada's most important industries, contributing significantly to the economies of rural communities and the state as a whole. Nevada's ranches may be few in number, but they rank third in the nation in size, averaging 3500 acres.

Nevada agriculture is directed primarily toward range livestock production. Cattle and calves are the leading agricultural industry. Cow-calf operations predominate with a few stocker operators and feedlots.

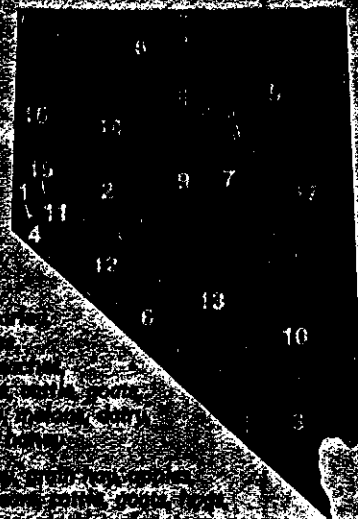
Dairy, sheep and lambs, and hogs number among Nevada's other livestock enterprises. The larger cattle and sheep ranches are found in the northern half of the state. The greatest number of dairies occur in northern Nevada, but the largest dairies are in the south.

Despite Nevada's arid climate, excellent crops are produced where land can be irrigated. Alfalfa hay is the leading cash crop of the state. Much of the hay is sold to dairy operations in surrounding states. Significant quantities of alfalfa cubes and compressed bales are exported overseas each year. Alfalfa seed is another substantial crop.

Additional crops produced in Nevada include potatoes, barley, winter and spring wheat, corn, oats, onions, garlic, and honey. Smaller acreages of mint, fruits, and vegetables are grown throughout the state.



## Nevada Agricultural Commodities by County



01. Carson City: alfalfa hay, cattle, goats, sheep
02. Churchill: alfalfa hay, barley, wheat, grapes, apples, cherries, apricots, peaches, pears, plums, berries, cattle, goats, sheep, hogs, poultry, nursery stock, corn, honey
03. Clark: alfalfa hay, barley, grain hay, apples, apricots, peaches, pears, cattle, goats, hogs, poultry, sheep, nursery stock, turf, onions, pecans, pistachios, vegetables
04. Douglas: alfalfa hay, grain hay, wheat, dairy, cattle, goats, hogs, poultry, sheep, nursery stock, nursery stock
05. Elko: alfalfa hay, grain hay, apples, cattle, dairy, goats, hogs, poultry, sheep, nursery stock
06. Esmeralda: alfalfa hay, grain hay, cattle, poultry, sheep, carrots
07. Eureka: alfalfa hay, timothy hay, grain hay, cattle, dairy, goats, poultry, sheep
08. Humboldt: alfalfa hay, alfalfa seed, barley, grain hay, wheat, grass and native seed, onions, garlic, potatoes, mint, cattle, dairy, goats, hogs, poultry, sheep, nursery stock, turf
09. Lander: alfalfa hay, grain hay, timothy hay, cattle, dairy, goats, hogs, poultry, sheep
10. Lincoln: alfalfa hay, grain hay, apples, cattle, dairy, goats, hogs, poultry, sheep
11. Lyon: alfalfa hay, barley, grain hay, wheat, apples, berries, cherries, grapes, peaches, pears, plums, corn, garlic, honey, onions, potatoes, cattle, dairy, goats, hogs, poultry, sheep, nursery stock, turf
12. Mineral: alfalfa hay, cattle, dairy, poultry, sheep, honey
13. Nye: alfalfa hay, grain hay, apples, apricots, cherries, grapes, peaches, pears, cattle, dairy, goats, hogs, poultry, sheep, nursery stock, pecans, pistachios, pomegranates
14. Pershing: alfalfa seed, alfalfa hay, barley, grain hay, wheat, cattle, dairy, goats, hogs, poultry, sheep, honey, nursery stock
15. Storey: alfalfa hay, cattle, goats, honey
16. Washoe: alfalfa hay, grain hay, apples, cherries, grapes, peaches, cattle, dairy, goats, hogs, poultry, sheep, garlic, onions, honey, nursery stock, turf
17. White Pine: alfalfa hay, barley, grain hay, cattle, dairy, goats, hogs, poultry, sheep, plums

## **The Nevada Department of Agriculture**

The Nevada Department of Agriculture was established in 1915 by Chapter 561, Nevada Revised Statutes.

The mission of the Department is to benefit the welfare of all persons residing in the State by encouraging the advancement and protection of Nevada's agriculture and related industries.



### **Nevada State Board of Agriculture**

The Nevada State Board of Agriculture advises the Governor, Legislature, and Director of the Department of Agriculture concerning agricultural issues relating to Nevada and establishes the Department's agricultural policies. The Board is comprised of individuals representing various sectors of Nevada's agriculture industry.

### **There are six Divisions within the Nevada Department of Agriculture:**

- Division of Animal Industry
- Division of Livestock Identification
- Division of Plant Industry
- Division of Measurement Standards
- Division of Resource Protection
- Division of Administration

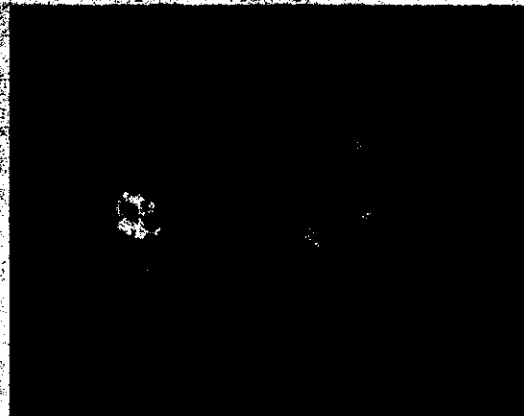
### **Division of Animal Industry**

The Division of Animal Industry assists in the diagnosis and eradication of quarantinable animal diseases in cooperation with federal agencies, private veterinarians, and livestock owners. It also assists in the diagnosis and control of animal diseases that are of economic or public health significance. In addition, the Division provides information on requirements for interstate and international movement of animals.



### **Division of Livestock Identification**

The Division of Livestock Identification protects against livestock theft through brand inspection procedures when certain livestock change ownership, are shipped specified distances, or go to processing plants. It investigates livestock losses on roads and railways, and processes stray livestock. In addition, information on recording brands, brand inspections, and related topics can be obtained from this division.







## Division of Plant Industry

This is the most diverse division in the Department. The Division of Plant Industry conducts cooperative programs with the United States Department of Agriculture, and the United States Environmental Protection Agency, as well, state, county, and city agencies.

### The Division of Plant Industry science and technical services include:

- Seed Inspection
- Pesticide Use Monitoring
- Plant Nursery Inspections
- Weed Free Hay Program
- Pesticide and Fertilizer Registration
- Nursery Inspection and Licensing
- Pest Control Operator Licensing
- Organic Certification
- Federal and State Quarantine
- Produce Inspection
- Federal and State Egg Grading
- Insect Identification and Survey (Entomology)
- Plant Disease Identification and Survey (Plant Pathology)
- Vertebrate Pest Management
- Noxious Weed Program
- Junior Agriculture Loans
- Pesticide, Fertilizer, and Petroleum Analytical Laboratories
- Livestock Feed Labeling

## Division of Measurement Standards

### Bureau of Weights and Measures

The Bureau of Weights and Measures assures consumers that the weight or measure of food and non-food products, services, or commodities purchased in Nevada is accurate. Staff checks the quantity labeling on packages, investigates complaints, and annually inspects 29,000 scales, gas pumps, and meters statewide.



### Bureau of Petroleum Technology

The Bureau is responsible for the development of fuel standards for internal combustion engines. It analyzes an average of 3500 samples of fuel offered for sale at service stations each year. When non-standard fuels are found, the Bureau of Weights and Measures is notified so corrective actions can be taken.

### Division of Resource Protection

The mission of the Division of Resource Protection is to protect Nevada's agricultural, industrial and natural resources, and to safeguard public health and safety through cooperative assistance in the control and prevention of damages and diseases caused by wildlife. The Division provides assistance to the residents of Nevada in the management and abatement of damage caused by predatory animals, birds, and rodents throughout the State of Nevada.

