

DISCLAIMER

Electronic versions of the exhibits in these minutes may not be complete.

This information is supplied as an informational service only and should not be relied upon as an official record.

Original exhibits are on file at the Legislative Counsel Bureau Research Library in Carson City.

Contact the Library at (775) 684-6827 or library@lcb.state.nv.us.

WEEDS



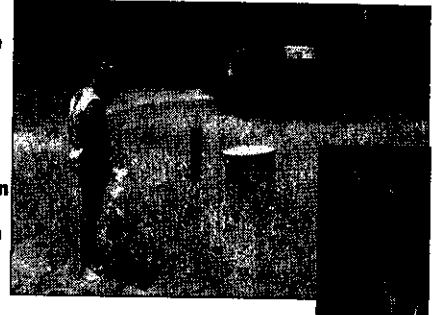
they're not just
dandelions

they're not just an
agriculture issue.....



LOSS OF RECREATION AREAS

- *yellow
starthistle
- *1-2 inch
spines
- *toxic to
horses
- *22 million
acres
infested in
California

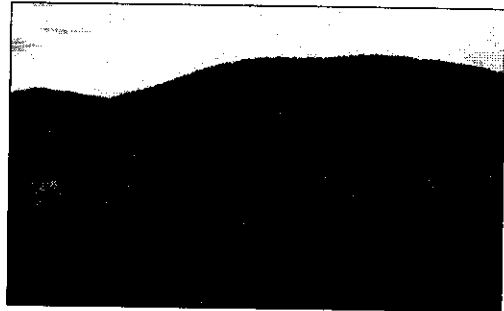


REDUCTION OF AVAILABLE WATER

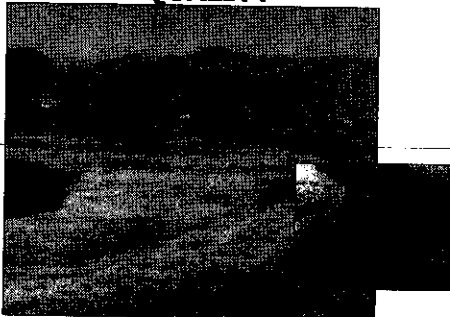


- *tamarisk
- *uses up to
300ga
water/day

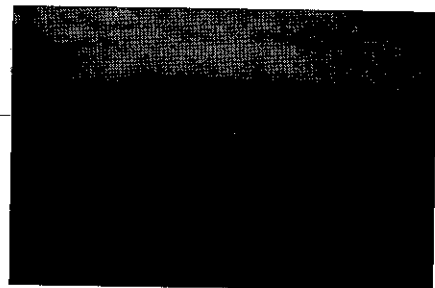
LOSS OF NATIVE HABITAT: ECOSYSTEM DEGRADATION



CREATE EROSION; LOWER WATER QUALITY



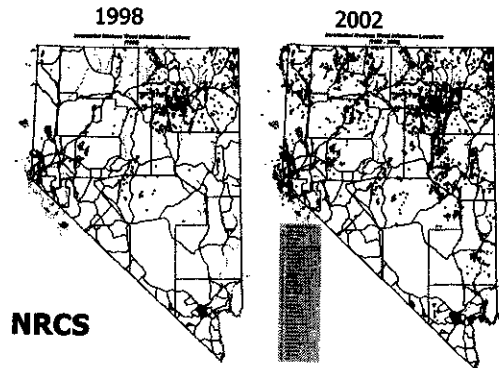
LOSS OF LIVESTOCK/WILDLIFE FORAGE



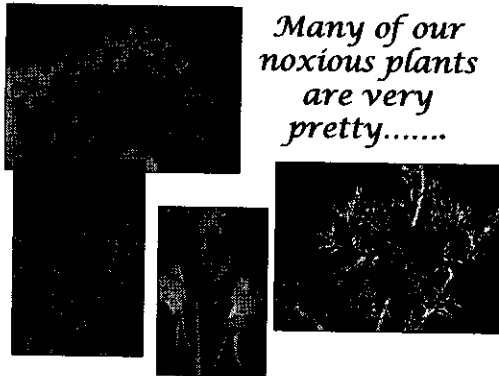
DECREASED PROPERTY VALUE



Statewide mapping efforts

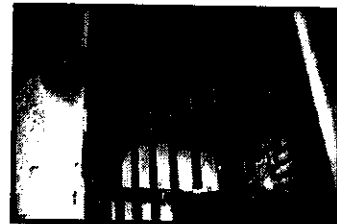


*Many of our
noxious plants
are very
pretty.....*



NEVADA'S NOXIOUS WEED LAW

NRS 555.031-220



"...I didn't know yellow starthistle was illegal...."

What is a 'noxious' weed?

"any species of
plant which is
or is likely to be
detrimental or
destructive and
difficult to
control or
eradicate"

(NRS 555.005)



Nevada State Weed Strategy December, 2000

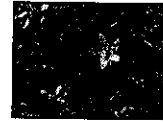
BLM	Washoe Tribe	BOR
USFS	NDOT	NV
USGS	DOD	Landscaping Assoc
NRCS	UNCE	NDF
State Parks	USDA-ARS	NPS
NDOW	NACO	Conservation Districts
Pyramid Tribe	Farm Bureau	
	USFWS	

Cooperative Weed Management Areas

CWMAs

Spring Creek Region	Storey County
Humboldt Watershed	West Central Lyon County
Long Valley/Newark	Walker River Basin
Railroad Valley	Alpine/El Dorado/Douglas
White River Valley	Tahoe Basin
Lincoln County	Carson City
Tri-County	Las Vegas Wash
Churchill County	Lander County TEAM
Gerlach	Elko County
Lower Truckee	Southern Nye County
Washoe Valley	

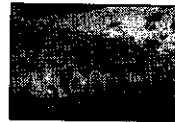
Education



Recognition



Early detection



Rapid response