

DISCLAIMER

Electronic versions of the exhibits in these minutes may not be complete.

This information is supplied as an informational service only and should not be relied upon as an official record.

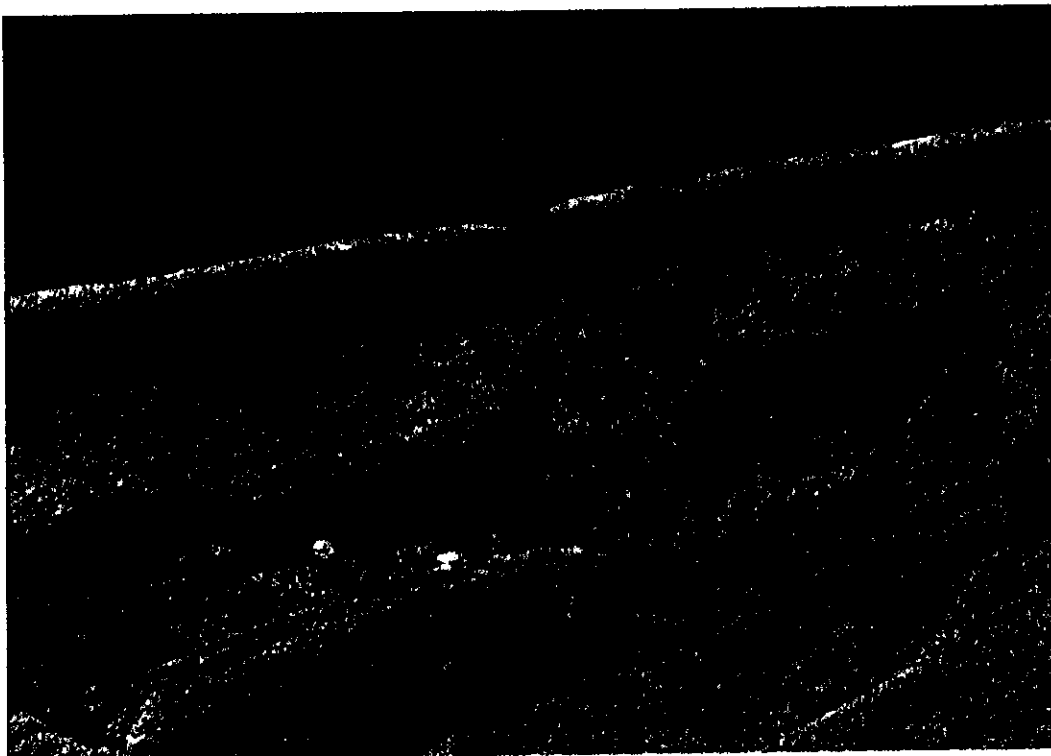
Original exhibits are on file at the Legislative Counsel Bureau Research Library in Carson City.

Contact the Library at (775) 684-6827 or library@lcb.state.nv.us.

Bishop Creek Reservoir



Upstream Face - Note the exposed rebar.



Upstream Face - Note the concrete spalling and deterioration of the rockfill face.

EXHIBIT L Senate Committee on Finance

Date: 4/2/03 Page 1 of 2

Bishop Creek Reservoir



Downstream face where piping occurred.



Upstream face